

BEP-515C

150 Watt

- **+24 V DC input**
- **150 Watt continuous fanless power!**
- **Operating temperature up to +70 °C**

By its rugged design and widerange input from 18 VDC to 36 VDC the 150 W ATX power supply BEP-515C is the ideal power supply for fanless working applications used in automation or mobile systems. Full power can be supplied at an ambient temperature of +50 °C. For easy connection an ATX cable harness is available.

Fit-form-function compatible power supplies with AC-Input or for medical use are available as BEP-515 and BEP-515M.



DC input

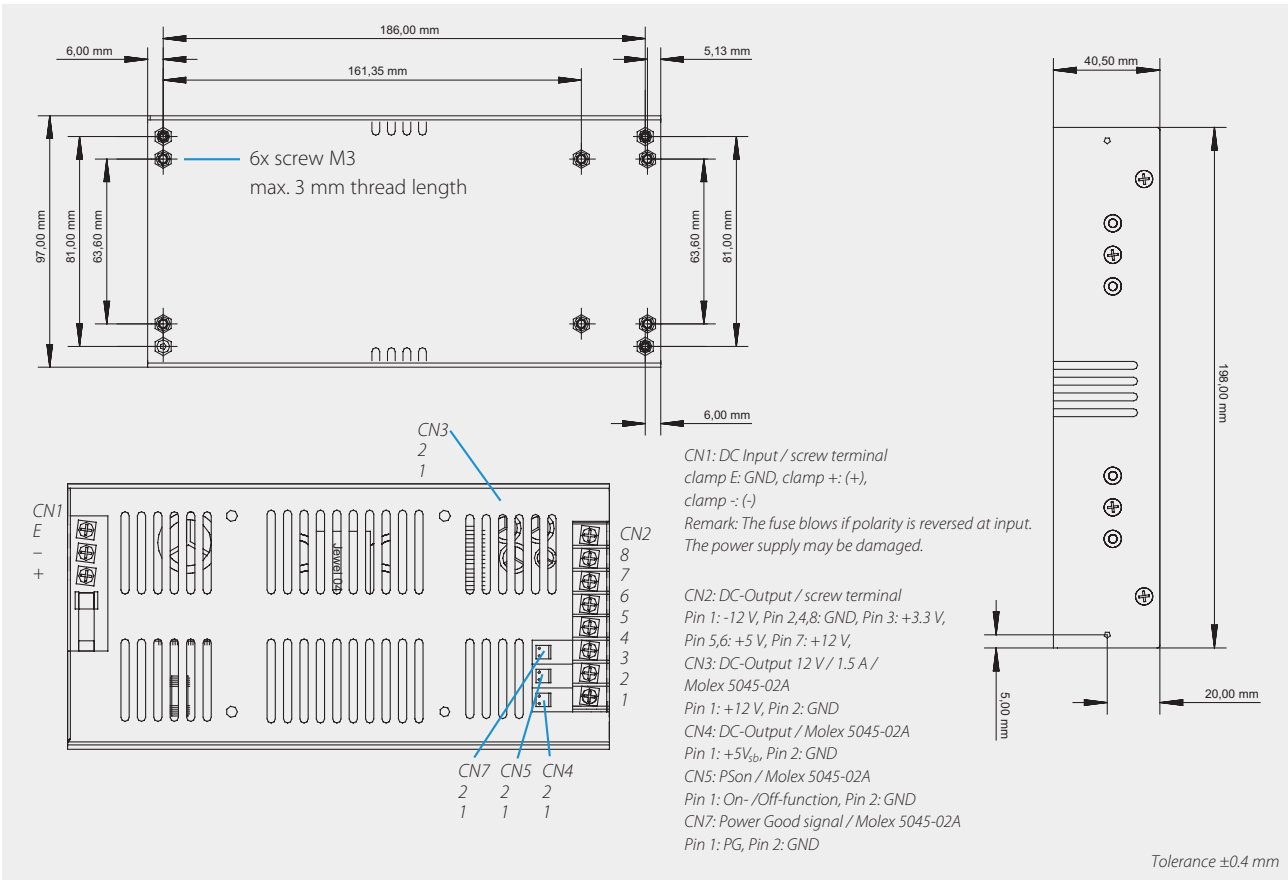


Technical data	
Input voltage	18...36 VDC
Input current	15 A max.
Inrush current	18 A max.
Efficiency	≥75 % (at nominal power and +24 VDC)
Hold up time	>5 ms (at nominal load and +24 VDC)
Power-Good-Signal	Switch on delay 100...500 ms Switch off delay 1 ms
Protection	Short circuit protection: At each output, switch off (-12 V), auto-recovery Overload protection: 130...180 %, switch off Overvoltage protection: +5 V (+5.4...+5.8 V), switch off Overtemperature protection: switch off at 120 °C (at temperature transformer T1)
Insulation voltage	Input / Chassis 1866 VDC Input / Output 1167 VDC
Safety / EMC	UL, CE
Operating temperature	0...+70 °C
Derating	+50...+70 °C, 2.5 % / °C
MTBF	130000 h at +50 °C according to MIL-217F
Storage temperature	-20...+70 °C
Operating humidity	5...95 % RH, non-condensing
Dimensions (WxDxH)	97 x 198 x 40 mm ±0.4 mm
Weight (net)	0.7 kg

Article No.	Output voltage	Output current		Rated load	Load regulation	Line regulation	Ripple & Noise
		min	max				
BEP-515C	+3.3 V	0 A	12 A	7.5 A	±4 %	±1 % at rated load and	50 mV
	+5 V	1 A	14 A	11 A	±2 %		50 mV
	+12 V	0 A	10 A	5 A	±4 %	±10 % change at input voltage	100 mV
	-12 V	0 A	1.0 A	0.5 A	±5 %		150 mV
	+5 V _{sb}	0 A	1.5 A	0.75 A	±4 %		100 mV

Combined output load at +3.3 V and +5 V must not exceed 90 W. The +5 V output can supply up to 14 A if a minimum load of +3.3 V / 0.2 A and +12 V / 2 A is connected. The +3.3 V output can supply 12 A if a minimum load of +5 V / 2 A and +12 V / 0.2 A is connected. Ripple and Noise was measured by a 20 MHz bandwidth limited oscilloscope with connected 10 µF electrolytic capacitor and 0.1 µF ceramic capacitor at each output. Load regulation was done by changing the measured output load ±40 % from 60 % rated load and all other outputs kept at 60 % rated load. As a power component this PSU is for assembly purposes only and must not be operated in unassembled condition. The final assembly has to comply with the valid EMC and safety standards.

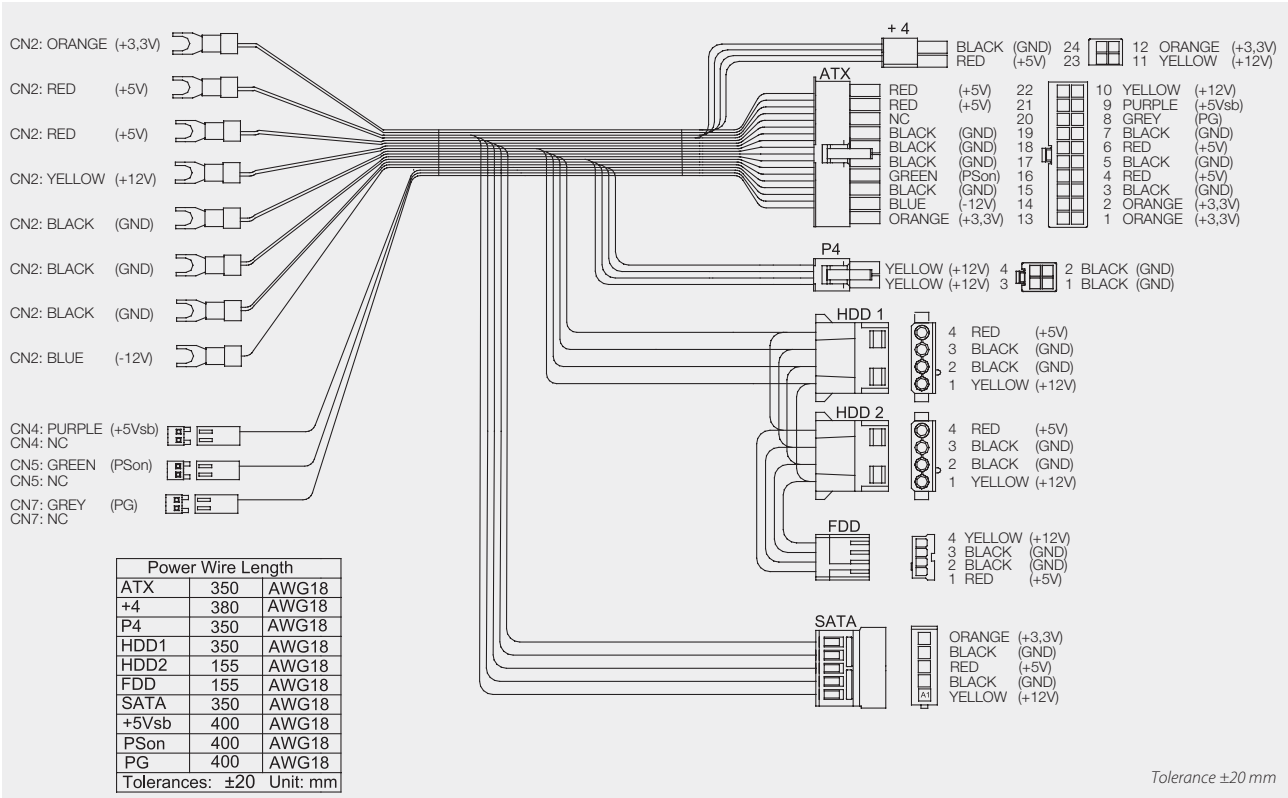
Drawing BEP-515C



DC input

Optional accessory ▷▷▷ For detailed information please visit our website www.bicker.de and refer to the article number.

Article No.	Description
CB-515	ATX cable harness for BEP-515 / BEP-515C / BEP-515M, 350 mm



Specification is subject to change without notice. Errors excepted. Status as at: 28.10.2013