

UPSIC-1205D

12 VDC / 5 A

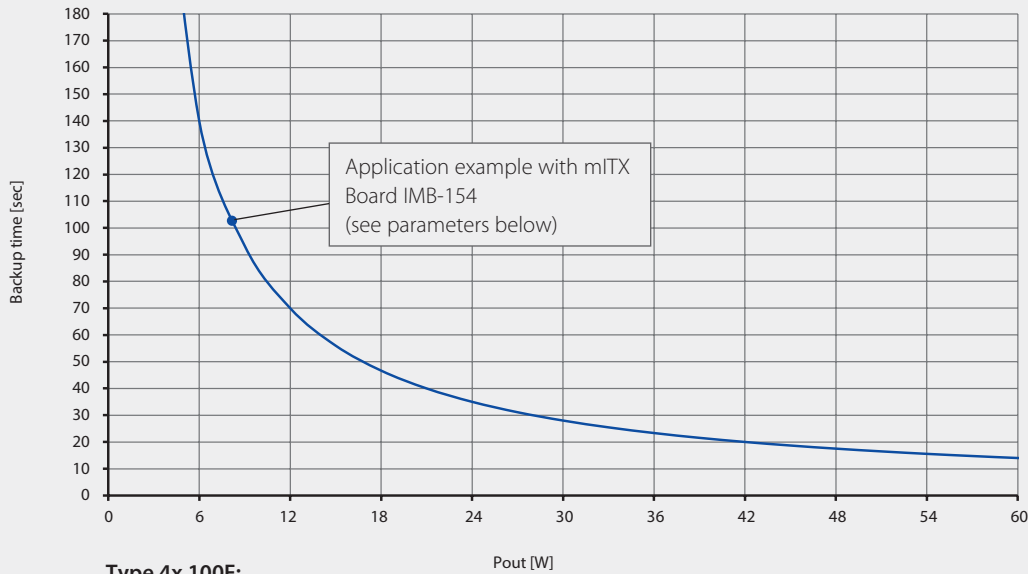
- ✓ Regulated voltage at backup
- ✓ Maintenance-free supercaps for energy storage
- ✓ High cycle stability > 500 000
- ✓ Charge time <60 sec at maximum charge current
- ✓ Extended temperature range -20...+70 °C
- ✓ Compact DIN rail chassis
- ✓ Active reverse polarity protection
- ✓ Power Fail signal via relay, RS232 connection
- ✓ Intelligent charge sharing
- ✓ Reboot Function
- ✓ Operation of UPS at host without software possible
- ✓ Output release from 90 % supercap capacity



Including
UPSCoM Management
Software

| Technical data | |
|-----------------------------|---|
| Input voltage | 12 VDC (11.6...16 VDC) |
| Input current | 5.8 A nom. |
| Output power | 60 W |
| Output voltage battery mode | 12 VDC ±2 % regulated |
| Output voltage normal mode | $V_{in} - 0.3 \text{ V}$ at 100% load |
| Output current | 5 A |
| Output ripple | ≤30 mV |
| Backup efficiency | 97 % ($V_{\text{Supercaps}} = 9.5 \text{ V}, I_{\text{out}} = 2.5 \text{ A}$) |
| Charge current | Depending on load up to 6.2 A CC (V_{Supercap}) |
| Charging method | CC / CV |
| Storage type | Supercaps 4x 100 F |
| Charging time | <60 sec at maximum charge current @ 4x 100 F |
| Backup time | See diagram |
| Protection | Overcurrent protection – Non LATCH Active reverse polarity protection |
| Power Fail Relay | DC fail: contact closed (see page 3) |
| Safety / EMC | CE |
| Temperature | Operating: -20...+70 °C / Storage: -20...+70 °C |
| Humidity | Operating: 10...85 % RH, non-condensing / Storage: 10...90 % RH, non-condensing |
| Dimensions (WxDxH) | 36 x 103 x 147 mm |
| Weight (net) | 0.367 kg |

Backup time



Type 4x 100F:
Standby@NoLoad >30 min
— @nom. Cap. & 25 °C

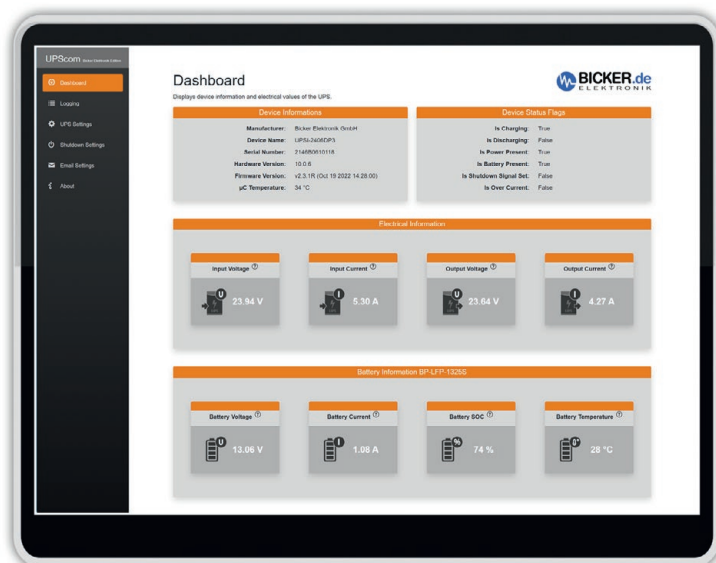
Parameters of the test system for the backup curve

| | | | |
|--------------|---|----------------------|--|
| Board | IMB-154 L0.36 SN: 59MOX2003883 CPU: Braswell N3150; 4x 1.60GHz | ROM | 1x mSATA 32GB Type: CIE MSM300M JB032GS SN: CIE164905767 |
| RAM | 2 x 4GB / DDR3 SO-DIMM 1600MHz FB Type: CIR-S3SUSKA 1604G SN: CIR 154630106 CIR 154630106 | OS | Microsoft Windows 10 Enterprise Evaluation Version 1511 Build 10586.589 (2016/09/16) |
| | | Test Software | BurnInTest V7.1 Pro |
| | | Test results | 100% load: 1 min. 43 sec. = 103 sec |

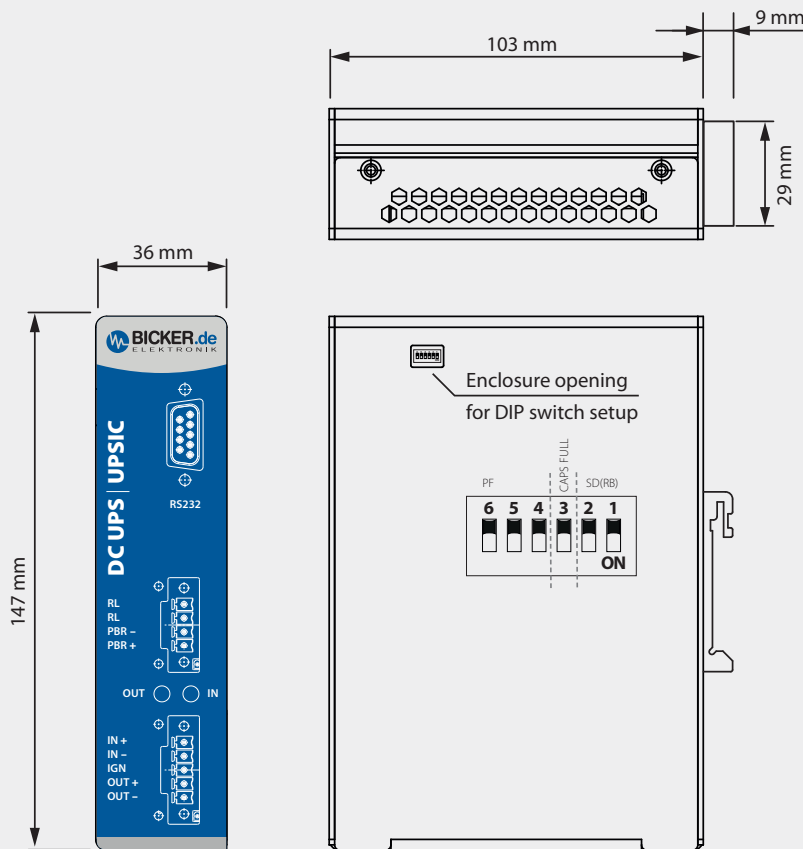
UPSCoM Management Software

UPS management software 'UPSCoM' with intuitive user interface

The software is available for free download directly on the product page at www.bicker.de.



Drawing UPSIC-1205D



Counterpart Relay connector:

Dinkle EC381VM-04P

Counterpart Power In-Out connector:

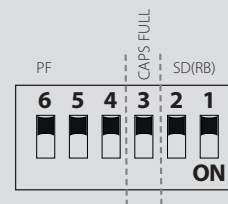
Dinkle EC381VM-05P

Counterparts included in scope of delivery

Power Fail: relay contact 3+4=0 Ω

0.5 A@125VAC / 1 A@24VDC

DIP switch setup



Power Fail (PF) - Timer

| 6 | 5 | 4 | PIN |
|-----|-----|-----|----------|
| ON | ON | ON | Software |
| OFF | ON | ON | 3s |
| ON | OFF | ON | 8s |
| OFF | OFF | ON | 20s |
| ON | ON | OFF | 40s |
| OFF | ON | OFF | 60s |
| ON | OFF | OFF | 100s |
| OFF | OFF | OFF | 150s |

Output release

PIN 3

ON Output released when V_{CAP} over 90 %

Shutdown Timer

| PIN | 2 | 1 |
|------------------|-----|-----|
| No Reboot | ON | ON |
| Reboot after 10s | OFF | ON |
| Reboot after 30s | ON | OFF |
| Reboot after 60s | OFF | OFF |

Connectors

RS232

| | |
|----|---|
| 01 | DCD at PC – Detection cable connected |
| 02 | TXD (is connected to RXT at PC) |
| 03 | RXD (is connected to TXD at PC) |
| 04 | Shutdown signal detection |
| 05 | GND |
| 06 | DSR at PC – Detection caps loading status |
| 07 | RTS at PC – Supply voltage |
| 08 | CTS at PC – Power Fail detection |
| 09 | N/A |

RL / PBR

| | |
|------------|---|
| 04 / RL | Relay connection |
| 03 / RL | Relay connection |
| 02 / PBR – | (V–) Shutdown-Signal (Impulse 200-400 ms) |
| 01 / PBR + | (V+) Shutdown-Signal (Impulse 200-400 ms) |

IN / IGN / OUT

| | |
|------------|-----------|
| 05 / IN + | V+ Input |
| 04 / IN – | V– Input |
| 03 / N.C. | N.C. |
| 02 / OUT + | V+ Output |
| 01 / OUT – | V– Output |

Tolerance ±0.5 mm

Specification is subject to change without notice. Errors excepted. Status as at: 19.02.2024