

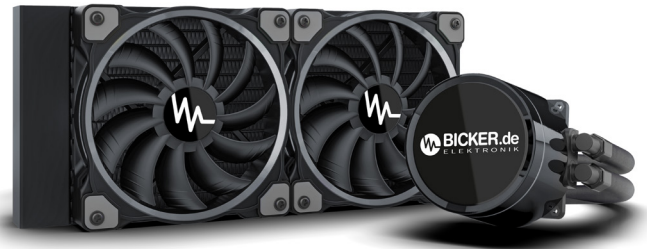
BEFC-125W-1700

FluidCooler

- ✓ For all CPU TPDs with LGA 1700 socket
- ✓ Enables full performance in Turbo Boost mode of 12th & 13th Gen Intel® Core™ processors
- ✓ 300 W max power

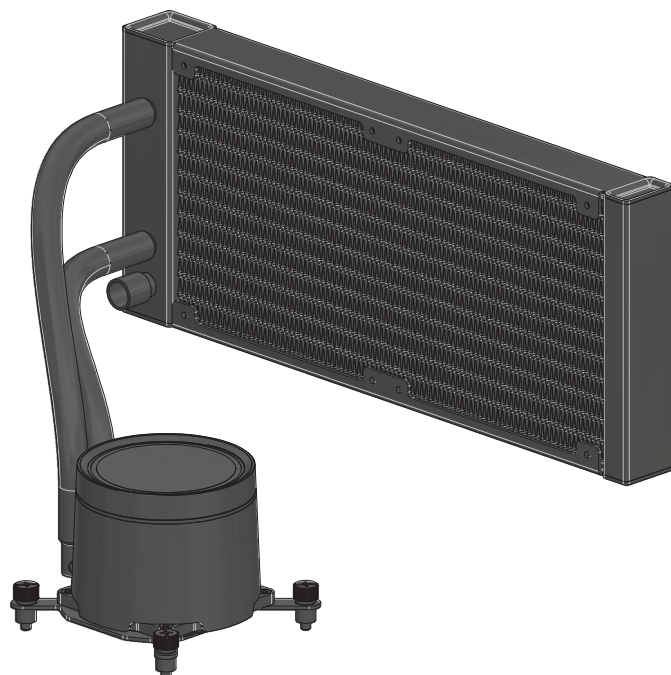
NOTE:

We use the fluid „Coolant E10“.

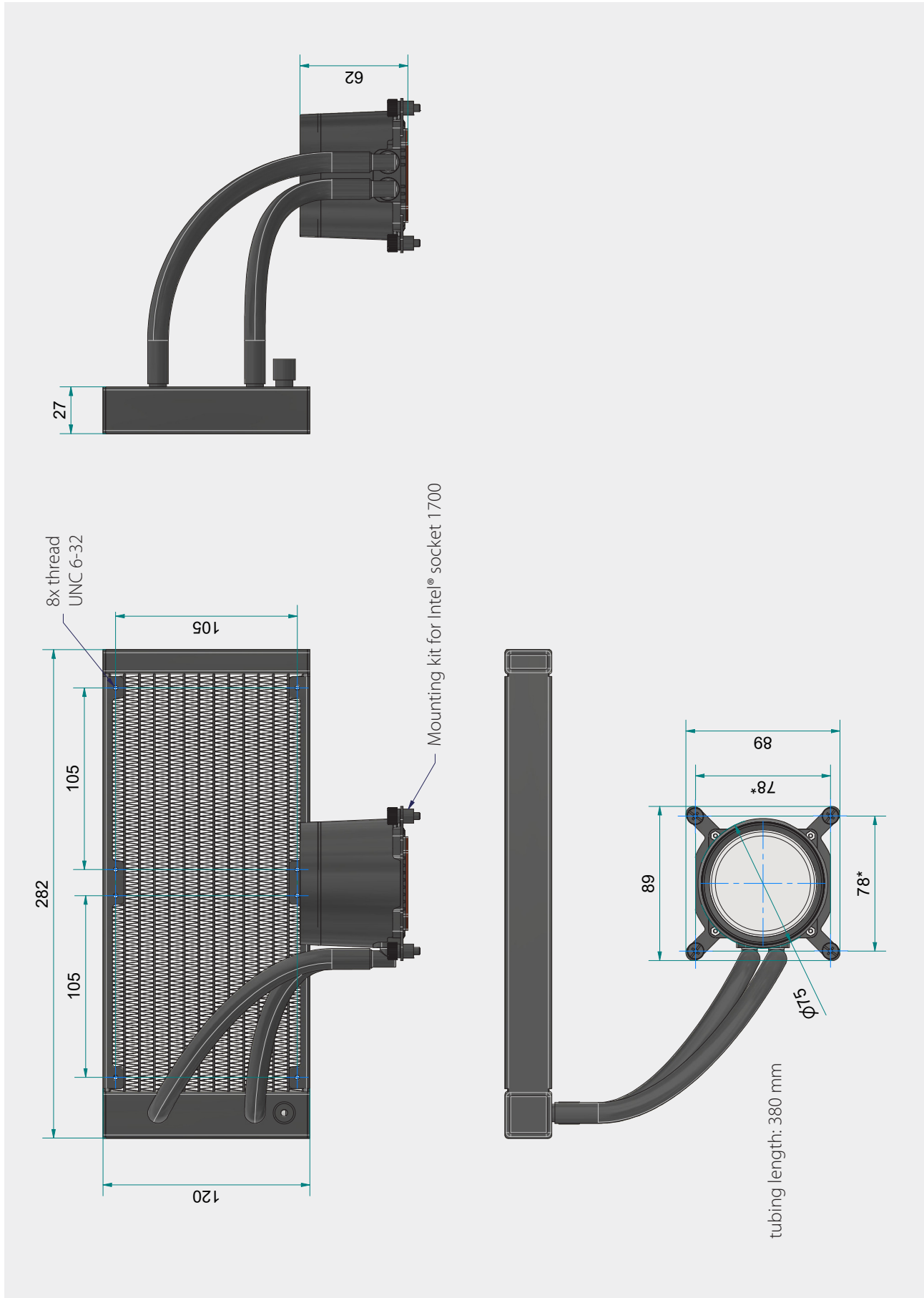
**Technical data**

Power	300W max
Operating voltage	12V
Functions	Tacho, PWM
RPM	400–1600
Bearing	Slide bearings
Volume flow	55.3 CFM
Noise level	32.5 dB (A)
Service life pump	L10 value at +35 °C ambient temperature: 40 000 h
Temperature	Ambient: +35 °C max Case: +70 °C max Coolant: +50 °C max
MTBF	25 000 h at +25 °C
Dimension	120 x 282 x 27 mm

The thermal and mechanical compatibility can vary depending on the system used and must always be checked and evaluated in advance!



Drawing



Specification is subject to change without notice. Errors excepted. Status as of: 07.03.2024