

BEAR-560H-B2

600 Watt

- ✓ Designed for server and storage systems
- ✓ Extended temperature range -20...+70 °C
- ✓ Silent due to regulated fan
- ✓ High efficiency up to 87 %
- ✓ 2 power inputs
- ✓ High reliability due to quality components
- ✓ No minimum load required
- ✓ Exchanging power rack during operation ensures high system availability



| Technical data | |
|-------------------------|---|
| Input voltage | 90...264 V AC, active PFC |
| Input frequency | 47...63 Hz |
| Input current | 9 A (90 VAC) / 4 A (264 VAC) |
| Inrush current | 25 A (132 VAC) / 50 A (264 VAC) |
| Efficiency | 80...87 % |
| Hold up time | 16 ms |
| Power-Good-Signal | Switch on delay 100...500 ms |
| Protection | Short circuit protection: At each output Overvoltage protection: +3.3 V (+3.6...+4.3 V) / +5 V (+5.5...+6.5 V) / +12 V (+13.2...+15.6 V) Overload protection: 110...160 % |
| Earth leakage current | <3.5 mA at 250 VAC |
| Safety / EMC | TÜV / UL / CE |
| Temperature | Operating: -20...+70 °C / Storage: -20...+80 °C |
| Derating | From +40...+50 °C, 1.5%/°C, from +50...+70 °C, 0.8%/°C |
| MTBF | >160000 h according to MIL-HDBK-217F at +50 °C with fan |
| Max. operation altitude | 5000 m |
| Humidity | Operating: 10...85 % RH, non-condensing / Storage: 10...90 % RH, non-condensing |
| Dimensions (WxDxH) | 150 x 185 x 86 mm ±0.5 mm |
| Weight (net) | 4.5 kg |

| Product specific data | |
|-----------------------|---|
| Alarm functions | 1. TTL signal*, 2. Failure LED, 3. Reset for acoustic alarm |

*Please visit our website www.bicker.de and refer to the article „BEAR-560H“ to get the description of „Open collector / TTL Signal“.

| Article No. | Output voltage | Output current | | Load regulation | Ripple & Noise |
|--------------|--------------------|----------------|-------|-----------------|----------------|
| | | min | max | | |
| BEAR-560H-B2 | +3.3 V | 0 A | 25 A | ±5 % | ±50 mV |
| | +5 V | 0 A | 25 A | ±5 % | ±50 mV |
| | +12 V | 0 A | 49 A | ±5 % | ±120 mV |
| | -12 V | 0 A | 0.8 A | ±5 % | ±120 mV |
| | +5 V _{sb} | 0 A | 3.5 A | ±5 % | ±50 mV |

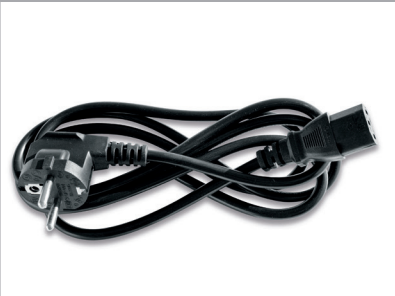
Max output load must not exceed 600 W. Comb. output current at +3.3 V and +5 V must not exceed 170 W. Ripple & Noise was measured by a 20 MHz bandwidth limited oscilloscope with connected 100 µF electrolytic capacitor and 100 nF ceramic capacitor. As a power component this PSU is for assembly purposes only and must not be operated in unassembled condition. The final assembly has to comply with the valid EMC and safety standards.

Optional Accessories

▷▷▷ For detailed information please visit our website www.bicker.de and refer to the article number.

X1-132 | Power cord

With IEC-60320-C13 connector, length 1800 mm

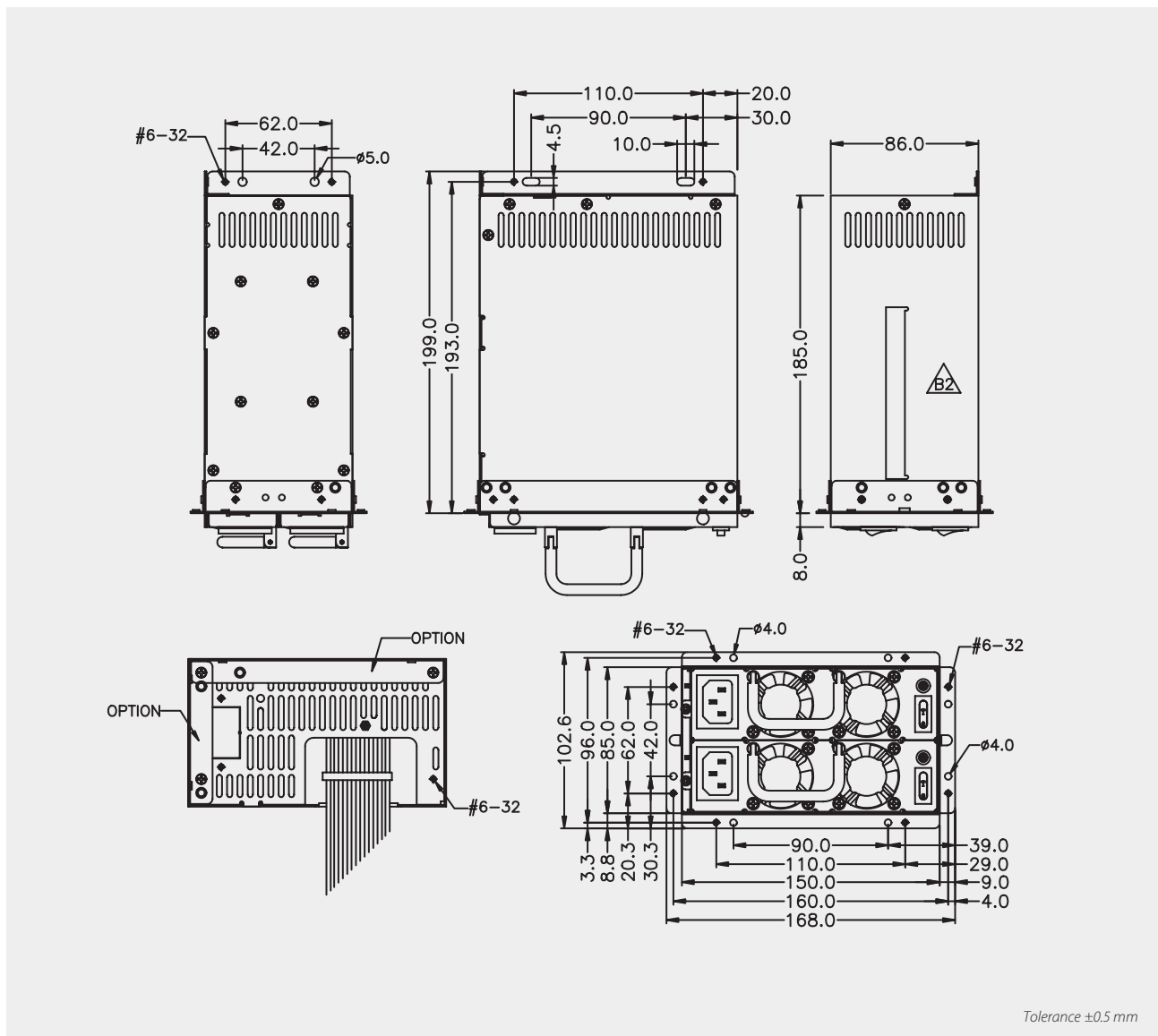


PSZ-1028 | Reset button

Reset button for acoustic alarm, with cable, length 550 mm



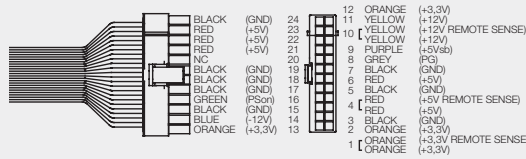
Drawing BEAR-560H-B2



Cable harness BEAR-560H-B2

Tolerance ±20 mm

ATX / EPS, 550 mm
20+4 Pin



EPS, 550 mm



EPS, 550 mm



P4 / EPS, 550 mm
4+4 Pin



PCI Express, 550 mm
6+2 Pin



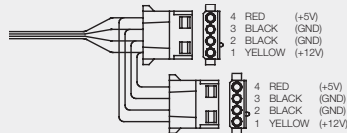
PCI Express, 550 mm
6+2 Pin



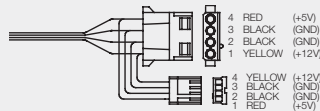
PCI Express, 550 mm
6+2 Pin



HD, 550 mm
HD, 200 mm



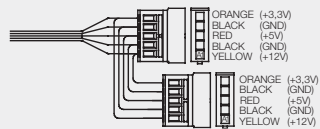
HD, 550 mm
FDD, 200 mm



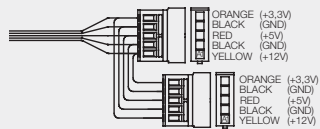
SATA 90°, 550 mm
SATA 90°, 750 mm



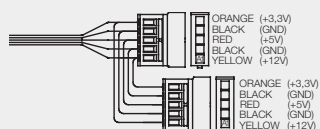
SATA, 550 mm
SATA, 200 mm



SATA, 550 mm
SATA, 200 mm



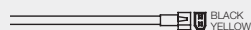
SATA, 550 mm
SATA, 200 mm



TTL signal, 1140 mm
(Molex 22-01-3027 or equal)



Reset for acoustic alarm, 740 mm
(Molex 03-06-2023 or equal)



Failure LED incl. connector in a heat shrink tube, 1190 mm



Specification is subject to change without notice. Errors excepted. Status as at: 09.11.2021