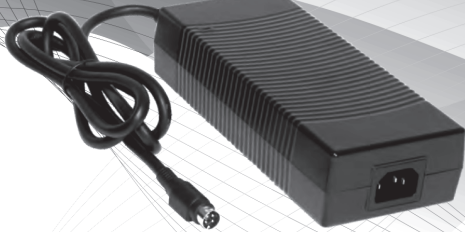


# ATS200T | 200 Watt



Level VI  
CoC Tier 2

## 200 Watt Series

Desktop Type

ATS200T - P X X X

P : C14 ← → O / P Current

### Green Mode

CEC, DoE Level VI, Energy Star, ErP Stage 2, CoC Tier 2, NRCan & GEMS Level VI  
No Load Power Consumption Less Than 0.15W

### Features :

- IEC/EN/UL 62368-1 & 60950-1
- 100-240 VAC Universal Input
- Single Output to 200W
- Regulated Output with Low Ripple Noise
- Safety Agency Requirements and EMI/EMS Certified
- Modified and Custom Design on request
- 3 Year Warranty

### Safety Approvals

CB / UL / cUL / FCC / GS / CE / PSE / BSMI / CCC / RCM

### Electrical

Topology	LLC
Dielectric Withstand	3000VAC Primary - Secondary
Leakage Current	3.5mA @ 3Pin
Efficiency	DoE Level VI, Energy Star, ErP Stage 2, CoC Tier 2, NRCan & GEMS Level VI Certified
EMC Standards	EN55032
	EN61000-3-2,3
MTBF	EN55024
	300,000 Calculated Hours at 25°C , by Telcordia SR-332

### Environmental

Operating Temperature	0 to + 40°C
Storage Temperature	-20 to + 80°C
Relative Humidity	Operating : 20 to 80% RH
	Storage : 10 to 90% RH
Cooling	Natural Convection Cooling

### Mechanical

Case Dimension	L 183 × W 81 × H 42 (mm)
Weight	850g (Ref.)

Model	O/P Voltage	O/P Current	Watt
ATS200T-P120	12.0V	16.00A	192W
ATS200T-P135	13.5V	14.00A	189W
ATS200T-P190	19.0V	10.50A	200W
ATS200T-P240	24.0V	8.30A	200W
ATS200T-P480	48.0V	4.17A	200W
ATS200T-P560	56.0V	3.58A	200W

### Input

Voltage	100-240VAC
Line Frequency	50-60Hz
Current	2.8A Max.
Protection	Internal Primary Current Fuse
Configuration	IEC60320/C14

### Output

Load Regulation	±5% ( Typical )
Ripple & Noise	1% Vp-p Max. for Output Voltage @ Full Load
Transient Response	0.5mS for 50% Load Change Typical
Hold-up Time	10mS @ Full Load
Protection	Short Circuit Protection / Over Voltage Protection / Over Current Protection / Over Temperature Protection
DC Cord	UL 2095 / UL 2464 / 16AWG
Ferrite Core	No (Optional)

### Please note for P versions:

The -Vout (secondary GND) is connected to PE as functional earth. If your application needs a safety earth an extra direct PE connection to earth must be implemented!

Specification is subject to change without notice. Errors excepted. Status as at: 30.09.2019

