

# MRW-5450V4V-B1

450 Watt

- Silent due to regulated fan
- High efficiency up to 86 %
- 2 power inputs

The mini-redundant MRW-5450V4V-B1 has been developed for server and storage systems. In case one power supply rack fails, the other one takes over the full load without any interruption. The subsequent exchange of the defective power supply rack during operation ensures a very high system availability. Separate mains supplies allow supply from different mains networks (UPS).



AC input

## Technical data

Input voltage	90...264 V AC, active PFC
Input frequency	47...63 Hz
Input current	7 A / (115 VAC) / 3 A (230 VAC)
Inrush current	25 A (132 VAC) / 50 A (264 VAC)
Efficiency	80...86 %
Hold up time	16 ms
Power-Good-Signal	Switch on delay 100...500 ms
Protection	Short circuit protection: At each output Overvoltage protection: +3.3 V (+3.6...+4.3 V) / +5 V (+5.5...+6.5 V) / +12 V (+13.2...+15.6 V) Overload protection: 110...160 %
Earth leakage current	<3.5 mA at 250 VAC
Safety / EMC	TÜV / UL / CB / CE
Operating temperature	0...+70 °C
Derating	From +50...+70°C, 1%/°C
MTBF	190 000 h (405 W) at +50 °C, without fan, according to MIL-HDBK-217F
Storage temperature	-20...+80 °C
Operating humidity	20...80 % RH, non-condensing
Dimensions (WxDxH)	150 x 185 x 86 mm ±0.5 mm
Weight (net)	4.2 kg

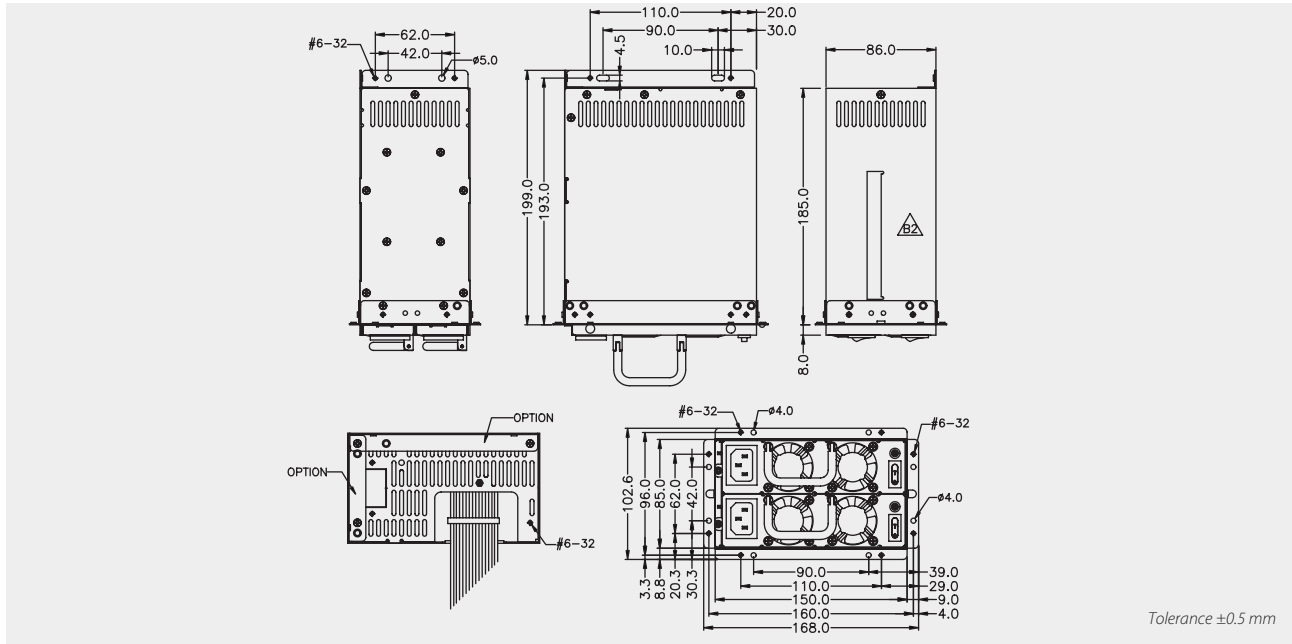
## Product specific data

Alarm functions	1. TTL signal, 2. Failure LED, 3. Reset for acoustic alarm
-----------------	------------------------------------------------------------

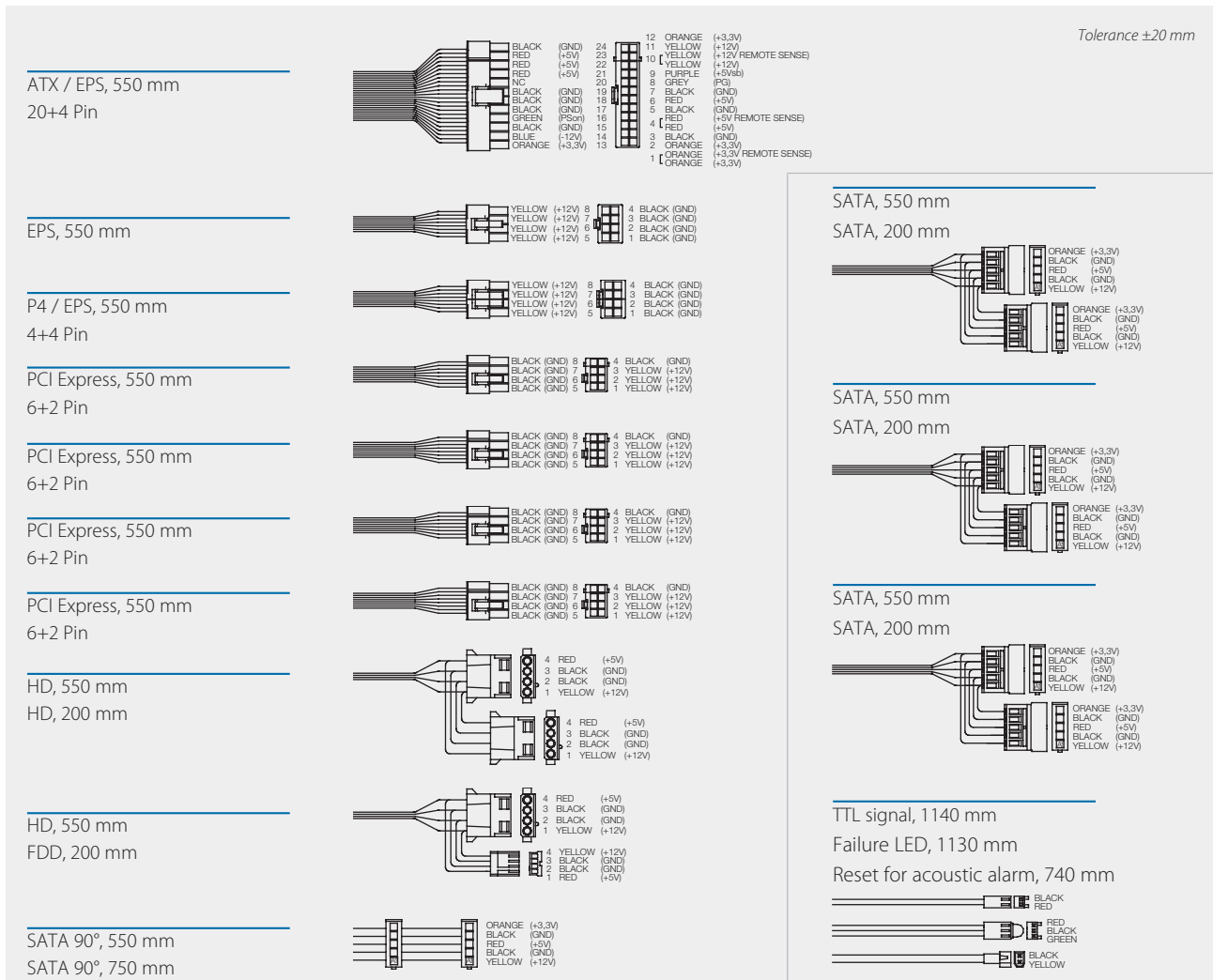
Article No.	Output voltage	Output current		Load regulation	Ripple & Noise
		min	max		
MRW-5450V4V-B1	+3.3 V	1 A	25 A	±5 %	±50 mV
	+5 V	1 A	25 A	±5 %	±50 mV
	+12 V	1 A	37 A	±5 %	±120 mV
	-12 V	0 A	0.8 A	±5 %	±120 mV
	+5 V <sub>sb</sub>	0.1 A	3.5 A	±5 %	±50 mV

Max output load must not exceed 450 W. Combined output current at +3.3V and +5V must not exceed 170 W. Ripple and Noise was measured by a 20 MHz bandwidth limited oscilloscope with connected 100 µF electrolytic capacitor and 100 nF ceramic capacitor.  
As a power component this PSU is for assembly purposes only and must not be operated in unassembled condition. The final assembly has to comply with the valid EMC and safety standards.

## Drawing MRW-5450V4V-B1



## Cable harness MRW-5450V4V-B1



Specification is subject to change without notice. Errors excepted. Status as at: 27.04.2012