

BEP-515M

150 Watt

- 150 Watt continuous **fanless** power!
- Approved to EN60601-1 and UL60601-1
- For medical 1 U systems

By its design and approvals to TÜV EN60601-1 and UL60601-1 the 150 W ATX power supply BEP-515M is the ideal power supply for medical fanless working applications. Full power can be supplied at an ambient temperature of +50 °C. For easy connection an ATX cable harness is available.

Fit-form-function compatible power supplies with AC-Input to IEC60950-1 (BEP-515) or DC-Input (BEP-515C) are available.



Technical data

Input voltage	90...264 VAC, active PFC
Input frequency	47...63 Hz
Input current	4 A (115 VAC) / 2 A (230 VAC)
Inrush current	30 A (115 VAC) / 60 A (230 VAC)
Efficiency	≥75 % (at nominal power and 115 VAC)
Hold up time	>16 msec (at rated load and 115 VAC)
Power Good signal	Switch on delay 100...500 msec Switch off delay 1 msec
Protection	Short circuit protection: At each output, switch off (-12V: shutdown of 3PIN regulator) Overvoltage protection: +5 V (+5.8...+6.4 V), switch off Overtemperature protection: switch off at +110 °C
Earth leakage current	<300 µA
Safety / EMC	CE, UL60601-1, TÜV: EN60601-1
Operating temperature	0...+70 °C
Derating	2.5 % / °K from +50...+70 °C, 90...109 VAC 120 W max. Without cover: +50 °C / 150 W With cover: +30 °C / 150 W, +40 °C / 135 W, +50 °C / 115 W
MTBF	130000 h at +50 °C according to MIL-217F
Storage temperature	-20...+70 °C
Operating humidity	5...95 % RH, non-condensing
Dimensions	198 x 97 x 40 mm ±0.4 mm
Weight (net)	0.7 kg

Product specific data

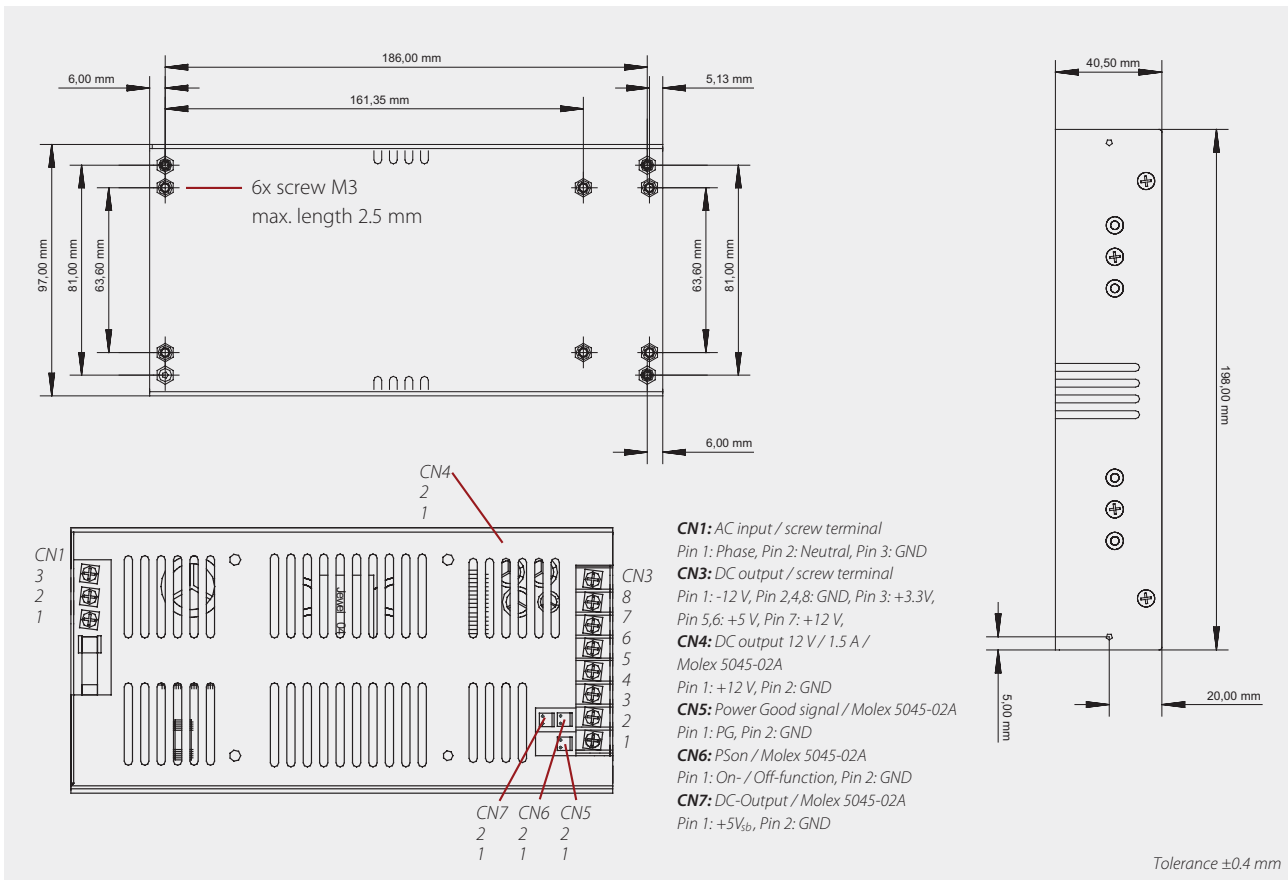
Start up delay	0.3...6 sec (230 VAC...115 VAC)
----------------	---------------------------------

Article No.	Output voltage	Output current			Load regulation	Line regulation	Ripple & Noise
		min	max	Rated load			
BEP-515M	+3.3 V	0 A	12 A	7.5 A	±5 %	Less than ±1 % at rated load with ±10 % change at input voltage	50 mV
	+5 V	1 A	14 A	11 A	±5 %		50 mV
	+12 V	0 A	10 A	5 A	±5 %		100 mV
	-12 V	0 A	1 A	0.5 A	±10 %		150 mV
	+5 V _{sb}	0 A	1.5 A	0.75 A	±5 %		100 mV

Combined output load at +3.3 V and +5 V must not exceed 90 W. The +5 V output can supply up to 14 A if a minimum load of +12 V / 0.8 A is connected. Ripple and Noise was measured by a 20 MHz bandwidth limited oscilloscope with connected 10 µF electrolytic capacitor and 0.1 µF ceramic capacitor at each output. Load regulation was done by changing the measured output load ±40 % from 60 % rated load and all other outputs kept at 60 % rated load.

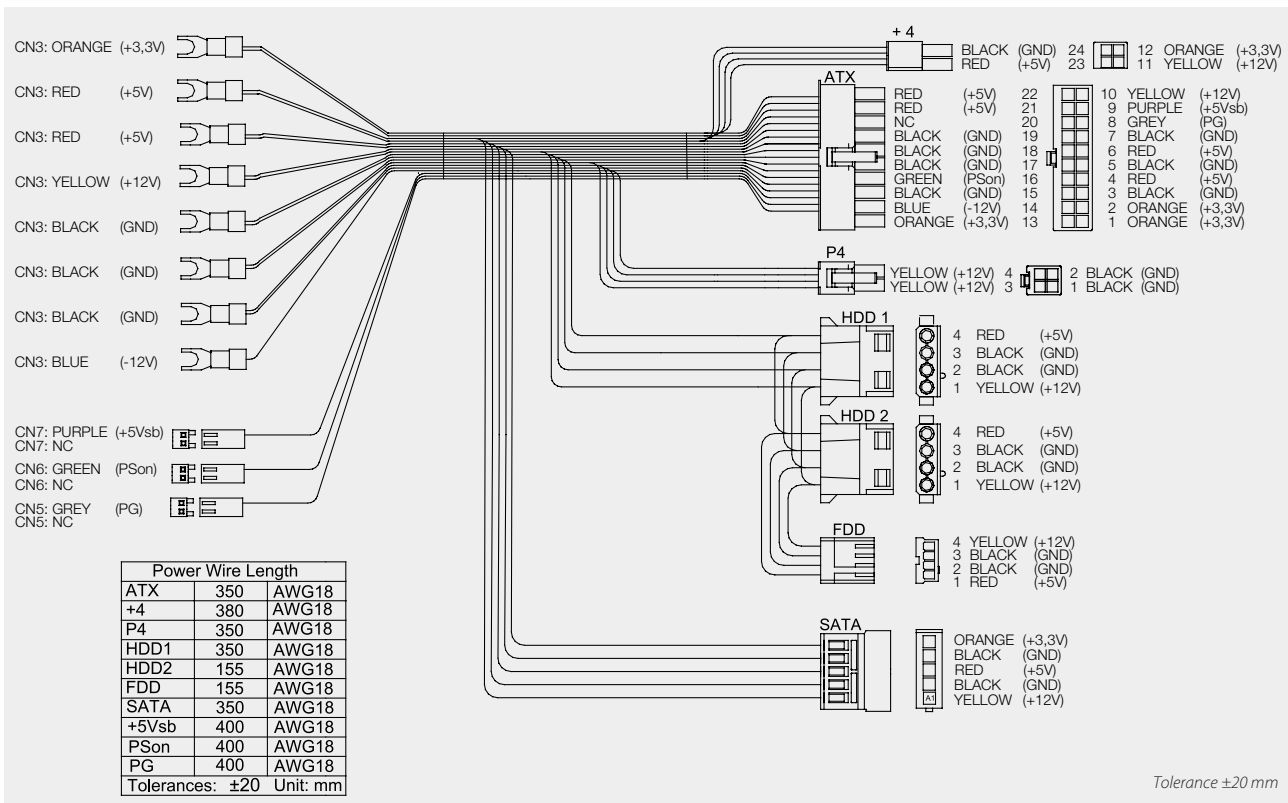
As a power component this PSU is for assembly purposes only and must not be operated in unassembled condition. The final assembly has to comply with the valid EMC and safety standards.

Drawing BEP-515M



Optional accessory

Article No.	Description
CB-515	ATX cable harness for BEP-515 / BEP-515C / BEP-515M, 350 mm



Specification is subject to change without notice. Errors excepted. Status as at: 28.04.2010